

HBS-BOLT® CSK

FOR BLIND AND HOLLOW STEEL CONNECTIONS

The HBS-Bolt® CSK is suitable for various steel connections due to its high shear capacity and large grip range. This enables installation where there is limited access as well as one-sided installation for fixing steel to hollow sections.

APPLICATIONS

- Fixing steel to hollow steel sections
- Use with square, rectangle and circular hollow sections
- High shear and tensile capacities
- Large grip range
- One-sided installation
- Steel framework including gantries, bridges, stadiums and transmission towers

Specifications/Features	
Type	Countersunk
Size	3-Part Assembly: M8, M10, M12
	5-Part Assembly: M16
Coating	Hot Dipped Galvanised
Material	Class 8.8



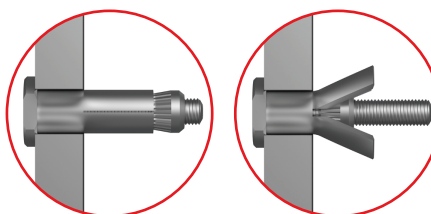
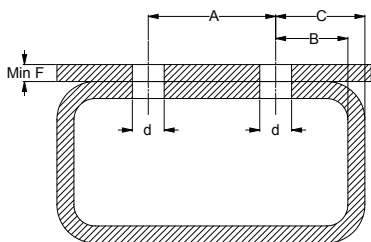
3-Part Assembly

MECHANICAL PROPERTIES

Legacy Code	Nominal Size	Characteristic Load ^a		Working Load	
		Tensile kN	Shear kN	Tensile kN	Shear kN
CFHBC8*	M8	24.3	26.1	6	7
CFHBC10*	M10	44.8	45.6	10	12
CFHBC12*	M12	51.6	58.3	13	15
CFHBC16*	M16	89.1	105.3	23	28

^acharacteristic loads are used to calculate design resistance and only apply to the HBS-Bolt® assembly. They should not be used as working loads. The design resistance of the connection may be lower due to material properties of other parts of the connection.

HOLE SIZE AND SPACING

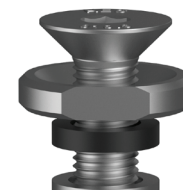


BEFORE

AFTER



5-Part Assembly



Collar with flats for use with open end spanner.

Nominal Size	Hole in Steel Work d (mm)	Hole Spacing		Edge Distance C (mm)	Min. Fixture Thickness F (mm)	Nominal Tightening Torque Nm
		A (mm)	B (mm)			
M8	14.0 – 15.0	35	13	C > 17.5	1	25
M10	18.0 – 19.0	40	15	C > 22.5	1	45
M12	20.0 – 21.0	50	18	C > 25.0	1	80
M16	26.0 – 28.0	55	20	C > 32.5	8	190

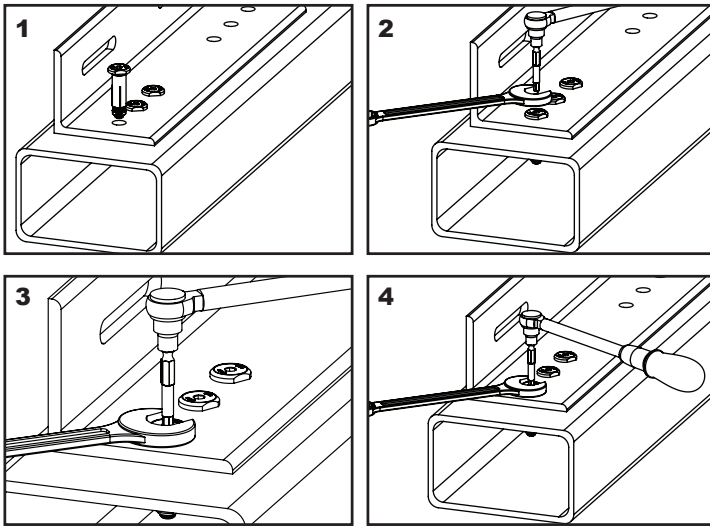
0800 425 262 steelandtube.co.nz

Disclaimer: this data should be used as a guide only, for exact applications you should engage the services of a qualified engineer.

HBS-BOLT® CSK

FOR BLIND AND HOLLOW STEEL CONNECTIONS

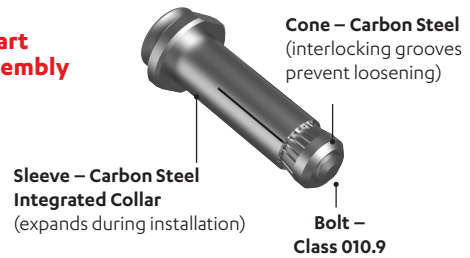
INSTALLATION



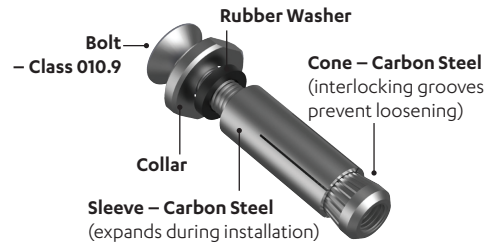
Installation A – D images

1. Bring steel work together, align pre-drilled holes and insert HBS-Bolt® CSK.
2. Prepare suitably sized open ended spanner torque wrench and internal hex drive bit.
3. Place spanner over the larger hex collar and insert drive bit in the internal hex drive.
4. Holding the spanner in place, tighten the bolt head to the specified tightening torque.

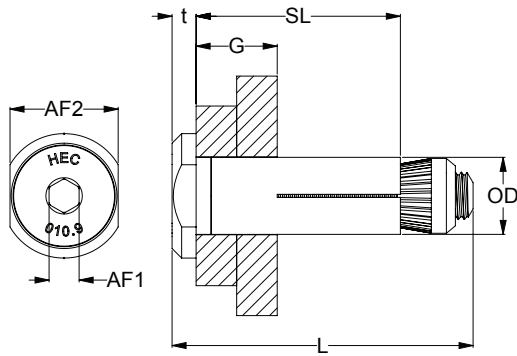
3-Part Assembly



5-Part Assembly



DIMENSIONS



3-PART ASSEMBLY

Legacy Code	P Code	Nominal Size	Bolt Length L (mm)	Grip Range G (mm)	Internal Hex Size AF1 (mm)	Sleeve		Collar	
						Length SL (mm)	Outer Ø OD (mm)	Across Flats AF2 (mm)	Thickness t (mm)
CFHBC850G	P0121008	M8	50	3 - 22	5	30	13.75	19	5
CFHBC870G	P0121009		70	22 - 41		49			
CFHBC890G	P0121010		90	41 - 60		68			
CFHBC1050G	P0121011	M10	50	3 - 22	6	30	17.75	24	6
CFHBC1070G	P0121012		70	22 - 41		48			
CFHBC1090G	P0121013		90	41 - 60		67			
CFHBC1255G	P0121014	M12	55	3 - 25	8	35	19.75	30	7
CFHBC1280G	P0121015		80	25 - 47		57			
CFHBC12100G	P0121016		100	47 - 69		79			

5-PART ASSEMBLY

Legacy Code	P Code	Nominal Size	Bolt Length L (mm)	Grip Range G (mm)	Internal Hex Size AF1 (mm)	Sleeve		Collar	
						Length SL (mm)	Outer Ø OD (mm)	Across Flats AF2 (mm)	Thickness t (mm)
CFHBC1670G	P0121017	M16	70	12 - 29	10	42	25.75	36	8
CFHBC16100G	P0121018		100	29 - 50		63			
CFHBC16120G	P0121019		120	50 - 71		84			

0800 425 262 steelantube.co.nz

Disclaimer: this data should be used as a guide only, for exact applications you should engage the services of a qualified engineer.

Information kindly provided by Hobson Engineering

