

HBS-BOLT® FLUSH

FOR BLIND AND HOLLOW STEEL CONNECTIONS

The HBS-Bolt® FLUSH is suitable for various steel connections due to its high shear capacity and large grip range. This enables installation where there is limited access as well as one-sided installation for fixing steel to hollow sections.

APPLICATIONS

- Fixing steel to hollow steel sections
- Use with square, rectangle and circular hollow sections
- High shear and tensile capacities
- Large grip range
- One-sided installation with flush fit head
- Steel framework including gantries, bridges, stadiums and transmission towers

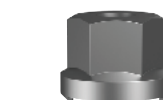
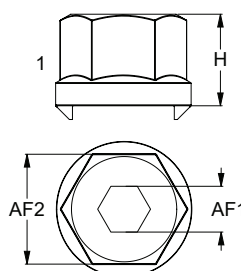
Specifications/Features	
Type	Flush
Size	3-Part Assembly: M8, M10, M12
Coating	Hot Dipped Galvanised
Material	Class 8.8



3-Part Assembly

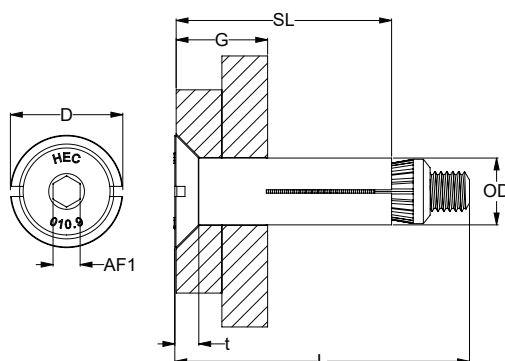
USE WITH

Flush Fit Sleeve Setting Nut				
Legacy Code	Nominal Size	Spanner Size AF2 (mm)	Height H (mm)	Inner Diameter AF1 (mm)
CFHBF00LM8	M8	19	20	8
CFHBF00LM10	M10	24		10
CFHBF00LM12	M12	30		12



Flush Fit Sleeve Setting nut **needed** for installation. 1x install tool included in each carton.

DIMENSIONS



3-PART ASSEMBLY

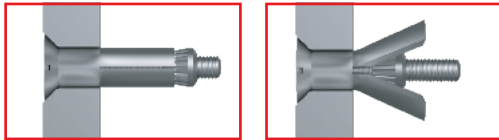
Legacy Code	P Code	Nominal Size	Bolt Length L (mm)	Grip Range G (mm)	Internal Hex Size AF1 (mm)	Sleeve		Collar	
						Length SL (mm)	Outer Ø OD (mm)	Across Flats AF2 (mm)	Thickness t (mm)
CFHBF850G	P0121020	M8	50	8 - 27	5	35	13.75	23.7	5
CFHBF870G	P0121021		70	27 - 46		54			
CFHBF890G	P0121022		90	46 - 65		73			
CFHBF1050G	P0121023	M10	50	9 - 28	6	36	17.75	27.7	6
CFHBF1070G	P0121024		70	28 - 47		54			
CFHBF1090G	P0121025		90	47 - 66		73			
CFHBF1255G	P0121026	M12	55	10 - 32	8	42	19.75	34.6	7
CFHBF1280G	P0121027		80	32 - 54		64			
CFHBF12100G	P0121028		100	54 - 76		86			

0800 425 262 steelandtube.co.nz

Disclaimer: this data should be used as a guide only, for exact applications you should engage the services of a qualified engineer.

HBS-BOLT® FLUSH

FOR BLIND AND HOLLOW STEEL CONNECTIONS

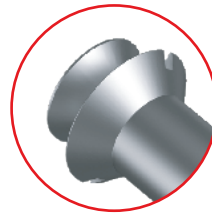


BEFORE

AFTER



Countersunk sleeve collar for a flush installation.



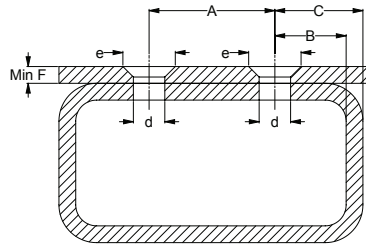
Contains two slot channels to hold the collar in place during installation.

MECHANICAL PROPERTIES

Legacy Code	P Code	Nominal Size	Characteristic Load ^a		Working Load	
			Tensile kN	Shear kN	Tensile kN	Shear kN
CFHBFTOOLM8	P0121029	M8	24.3	26.1	6	7
CFHBFTOOLM10	P0121030	M10	44.8	45.6	10	12
CFHBFTOOLM12	P0121031	M12	51.6	58.3	13	15

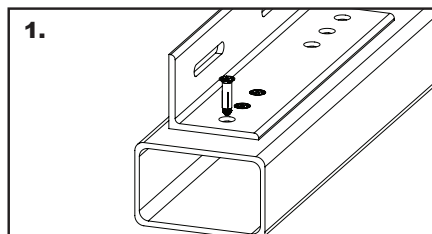
^acharacteristic loads are used to calculate design resistance and only apply to the HBS-Bolt® assembly. They should not be used as working loads. The design resistance of the connection may be lower due to material properties of other parts of the connection.

HOLE SIZE AND SPACING

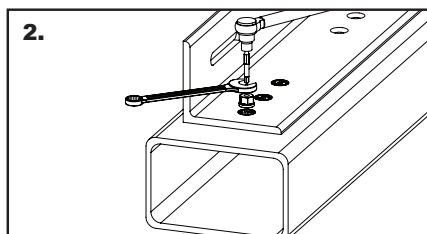


Nominal Size	Hole in Steel Work d (mm)	Countersink e (mm)	Hole Spacing		Edge Distance C (mm)	Min. Fixture Thickness F (mm)	Nominal Tightening Torque Nm
			A (mm)	B (mm)			
M8	14.0 – 15.0	23.5 - 24.0	35	13	C > 17.5	5	25
M10	18.0 – 19.0	27.5 - 28.0	40	15	C > 22.5	6	45
M12	20.0 – 21.0	34.5 - 35.0	50	18	C > 25.0	7	80

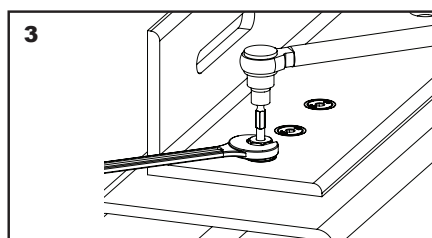
INSTALLATION



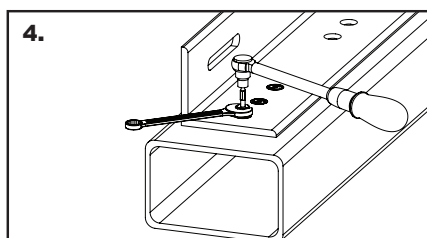
1.



2.



3.



4.

Installation Guide

1. Bring steel work together, align pre-drilled holes and insert HBS-Bolt® FLUSH.
2. Prepare suitably sized open ended spanner, flushfit sleeve setting nut (CFHBFTOOL*) and a torque wrench with internal hex drive bit.
3. Place spanner over the setting nut and insert drive bit in the internal hex drive.
4. Holding the spanner in place, tighten the bolt head to the specified tightening torque.

0800 425 262 steelandtube.co.nz

Disclaimer: this data should be used as a guide only, for exact applications you should engage the services of a qualified engineer.

Information
kindly provided
by Hobson
Engineering

