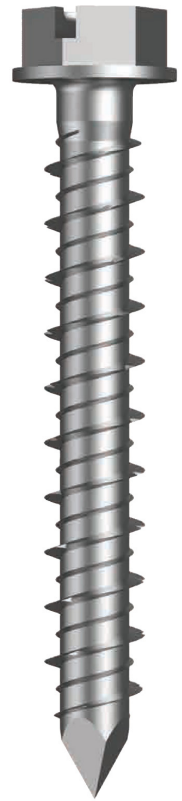


# TX-CON SCREW ANCHOR HEX SLOT

- Light to Medium Duty.
- No Plug Required.



APPLICATIONS	BASE MATERIALS
Electrical Conduit Saddles	Concrete
Pipe Saddles	Aerated Concrete
Lighting Fixtures	Brick
Signage	Hollow Concrete Block
Downpipes / Guttering Systems	Timber (Self Drilling)
Brackets	
Handrails	

BASE MATERIAL	COATING
Carbon Steel	1000 Hours Protective Coat Coating Thickness: Min 15 µm Coating Colour: Silver Grey

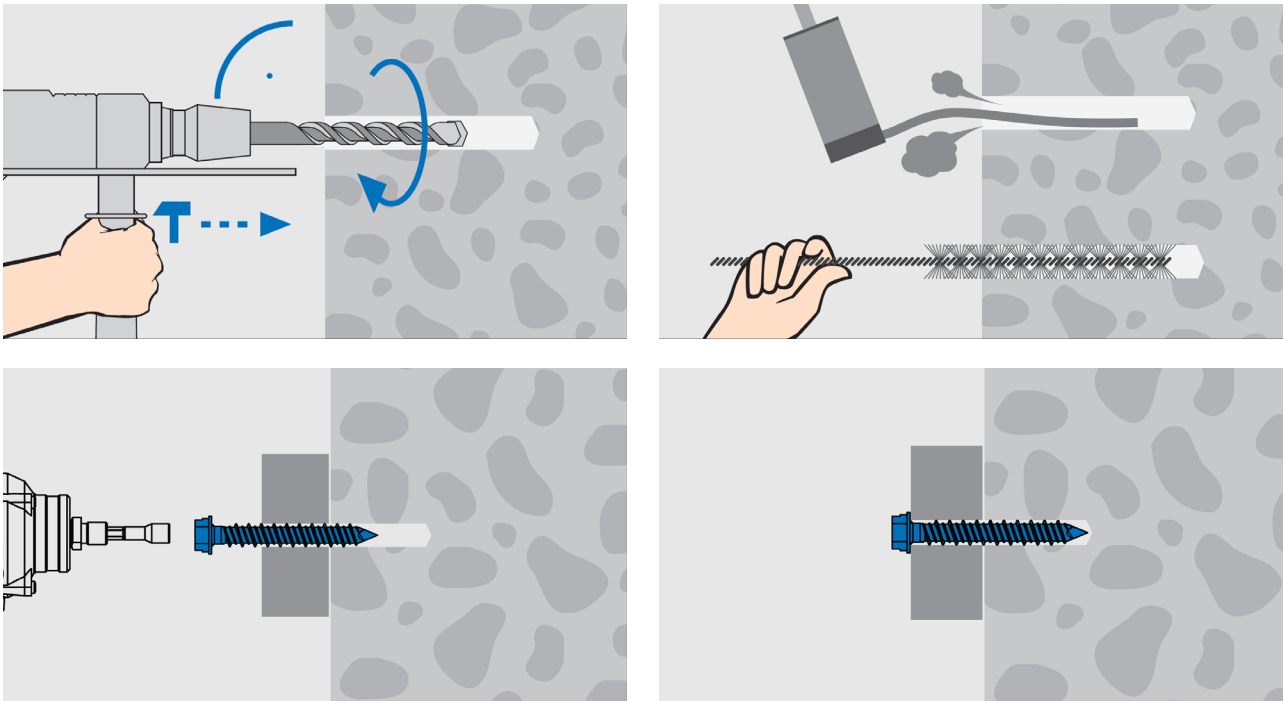
PART	QFIND	SIZE D (mm)	LENGTH L (MM)	DRIVE SIZE	PACK QTY
MTXTRHL65032	MTX110	6.5	32	5/16"	100
MTXTRHL65045	MTX111		45		100
MTXTRHL65058	MTX112		58		100
MTXTRHL65070	MTX113		70		100
MTXTRHL65083	MTX114		83		100
MTXTRHL65100	MTX115		100		100

CONCRETE STRENGTH F'C = 32 MPA

PART	SIZE	DRILL HOLE Ø (mm)	MIN. EMBEDMENT DEPTH $h_E$ (mm)	MIN ANCHOR SPACING $S_{CR,N}$ (mm)	MIN EDGE DISTANCE $0.5S_{CR,N}$ (mm)	WORKING LOAD IN TENSION <sup>1</sup> $N_{WLL}$ (kn)	WORKING LOAD IN SHEAR <sup>1</sup> $V_{WLL}$ (kn)
MTXTRHL65032	M6.5 X 32	Ø5	25	75	38	1.2	2.3
MTXTRHL65045	M6.5 X 45		32	96	48	1.9	2.7
MTXTRHL65058	M6.5 X 58		38	114	57	2.8	2.7
MTXTRHL65070	M6.5 X 70		45	135	68	4.2	2.8
MTXTRHL65083	M6.5 X 83		60	180	90	5.6	2.8
MTXTRHL65100	M6.5 X 100		60	180	90	5.6	2.8

1. Working load is the governing minimum allowable load obtained by comparing relevant concrete and steel working loads. Factor of Safety (FOS=2.5 for steel and FOS=3.0 for concrete) are already included.

## INSTALLATION



As per the images shown

Note: There are no torque values given for installations

The anchor should be installed so the head of the anchor comes into firm contact with the fixture - snug fit. The fixture should be firm against the base material.

Over tightening can potentially damage the fixture.

0800 425 262 [steelantube.co.nz](http://steelantube.co.nz)

Disclaimer: This data should be used as a guide only, for exact applications you should engage the services of a qualified engineer.